



INSTALLATION INSTRUCTIONS

CREATION 22 SOLID CLIC

These instructions are specifically written for the installation of the following products:

Product	Thickness	Installation Direction
Creation 22 Solid Clic	5mm	Same
Gerfix LVT Spray Adhesive	N/A	Spray Application

Important Note: Before installing, refer to 2023 Gerflor USA Installation Handbook for acclimation, job site conditions, subfloor prep, and other general installation recommendations.

1. GENERAL INFORMATION

- 1.1. Gerflor flooring products are formulated to withstand high moisture conditions. To perform as designed, the concrete should be properly prepared to create a contaminate free and porous substrate.
- 1.2. Gerflor flooring products are not designed to withstand hydrostatic or osmotic pressure.
- 1.3. *The guidelines offered within this document are not intended to be all inclusive. Only qualified, professional flooring technicians experienced in the field of resilient flooring should proceed with this installation system.*
- 1.4. It is recommended to mechanically prepare the concrete via grinding or bead blasting the surface to achieve a CSP 1+, clean and porous substrate.
- 1.5. Moisture and pH testing must be performed in accordance with ASTM F710-17.
- 1.6. Adhesive bond tests are recommended to ensure adequate bonding to the substrate.
- 1.7. Do not install material that has visible defects or damage. A contractor that installs material that has visible defects or damage assumes responsibility for that material.

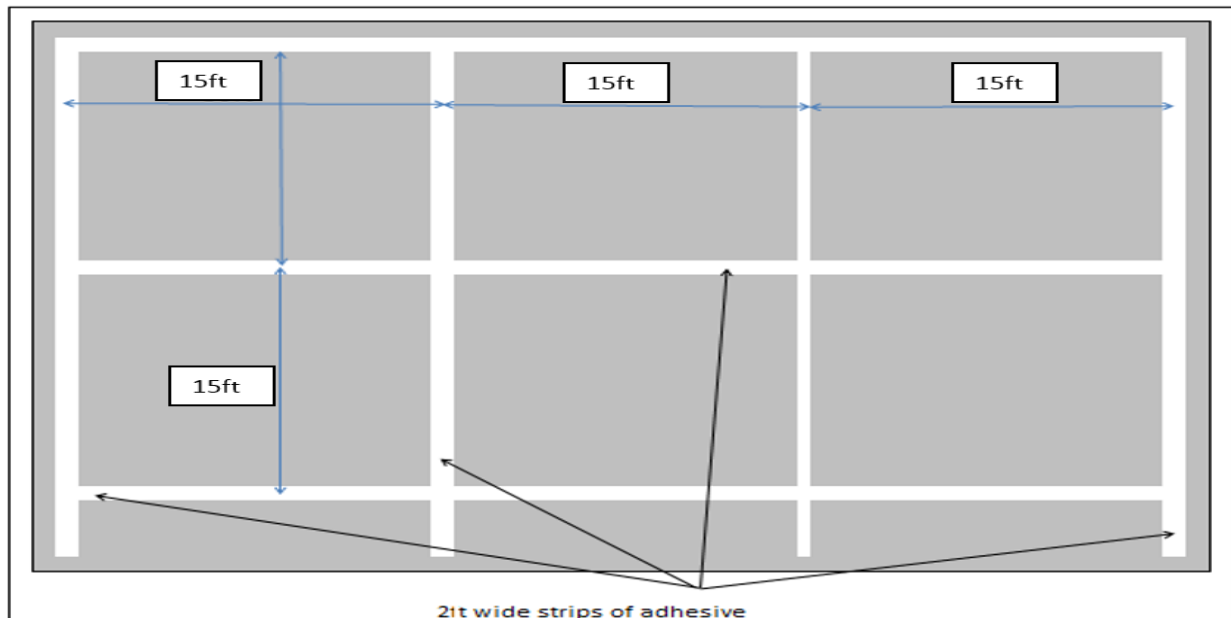
NOTE: Do not use acoustical underlayment products beneath Creation 22 Solid Clic.

NOTE: Do not mix batches of 22 Solid Clic within one installation if possible. If layout or the size of job requires two or more batches, try to break batches in doorways, or out of traffic patterns. It may be necessary to trim and fully adhere between batches if the lock profiles do not align perfectly. Call technical support for more details.

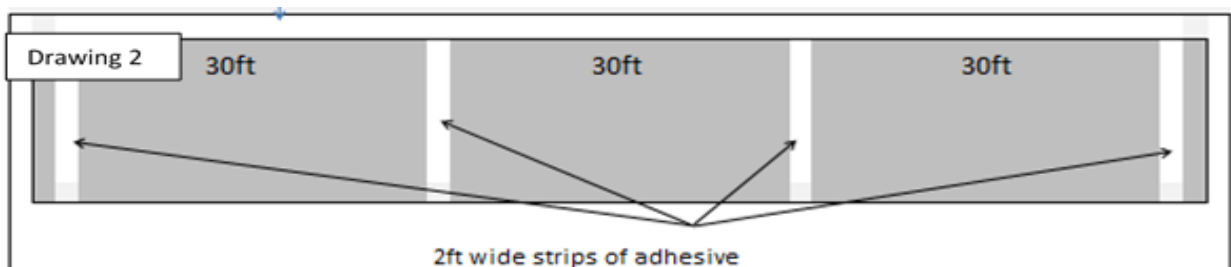
2. LAYOUT AND INSTALLATION

- 2.1. Boxes are clearly marked with batch numbers and the product should be checked for match before installing.
- 2.2. Inspect all materials carefully to verify that correct colors, lot number, patterns, quality, and quantities have been shipped as ordered. Do not install, cut, or fit any material that has visible defects.
- 2.3. Cabinets, heavy objects, shelves, etc., should be installed before the flooring and proper expansion room should be provided around all perimeters.
- 2.4. Using the spray adhesive will lock in place the planks and prevent any shifting over time.
- 2.5. Chalk the starting line.
- 2.6. Report the axe by a multiple of the width of a plank along the starting wall.

- 2.7. Install the 1st and 2nd rows (with a minimum 1/3 end joint offset) down from the axis to stabilize the installation and then install the row against the wall.
- 2.8. A gap of 1/4" minimum must be left on the perimeter of the walls.
- 2.9. Lay planks along the longest wall following the control line. Install enough rows moving backwards with the grooves facing towards you until you can work on top of the flooring.
- 2.10. Mix planks from different boxes to obtain a consistent layout. Begin stair-stepping the planks into the field area.
- 2.11. Use only Gerfix LVT & Plank Adhesive.
- 2.12. Apply adhesive every 10 to 15-in. ft. in both directions as seen on the drawing below:



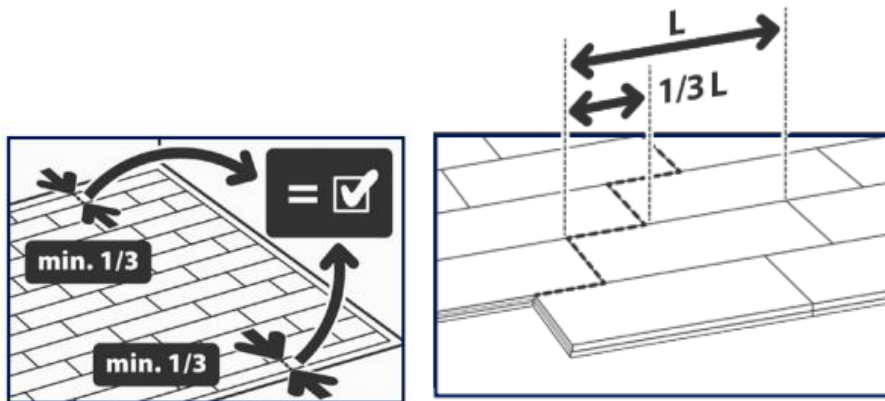
- 2.13. In corridors, the Creation 22 Solid Clic must be glued down every 10 to 15 feet across the width to stabilize.



- 2.14. At the end of the rows, the length of the cut planks must be at least 10 inches, especially at doorways and entrances.

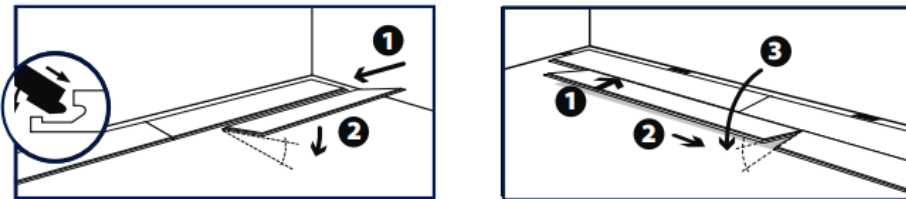
NOTE: For areas with direct sunlight, temperature fluctuations, and heavy traffic of rolling loads, we recommend full application of adhesive. (Install flooring before adhesive dries completely to avoid breaking of the lock profiles.)

- 2.15. Layout flooring where the width of the plank is at least 1/3 the width of the plank on all walls. and offset each row by at least 1/3 of the plank length (See images below)

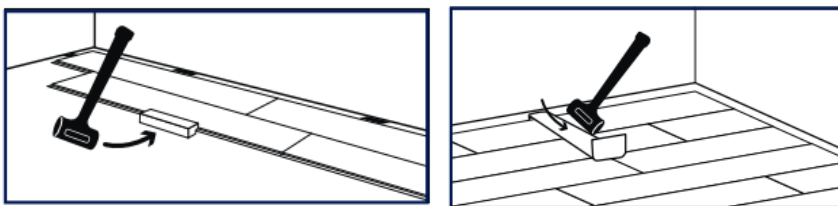


3. INTERLOCKING THE PLANKS

- 3.1. Start assembling the long edge inserting the tongue into the groove at a slight angle, and carefully position the tongue of the short edge over the groove of the previously installed one, then assemble the short edges with a non-rebound mallet if necessary.



- 3.2. Finish the interlocking with a tapping block (if necessary) and install the last row using a pull bar and mallet.



4. CUTTING AND FITTING

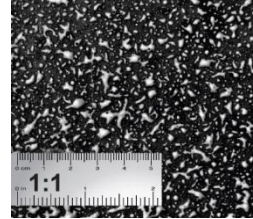
- 4.1. Overlap and score with a sharp utility blade for end cuts. A bullet cutter can also be used.



NOTE: For irregular shapes, heat planks with hot air gun and cut to fit

5. INSTALLING USING GERFIX SPRAY ADHESIVE

- 5.1. Always refer to the **Gerfix Spray Adhesive Technical Data Sheet**.
- 5.2. Recommended spray pattern: (150 to 185 sq. ft. per can)
- 5.3. Ensure substrate, flooring, and surrounding areas are clean and dust free.



- 5.4. Wipe hand across surface to verify for dust.
- 5.5. If dust transfers, substrate is not clean.
- 5.6. Damp-mop substrate if dust is present.



- 5.7. Protect from overspray with a spray shield, drop cloths, paper, or masking tape.
- 5.8. Shake aerosol can well. Remove white cap.

- 5.9. To ensure uniform adhesion of the entire surface, spray a workable amount of adhesive at one time.
- 5.10. Stand straight up to spray. Hold can upside down, approximately 20-30 inches horizontally from the substrate, aim at floor and press tip with finger.



- 5.11. Walk right to left smoothly to achieve results as seen on photo.
- 5.12. Adhesive should spray out in a wide mist and fall like snow.
- 5.13. Spraying in a sweeping motion may result in an inconsistent spray pattern.
- 5.14. Excess buildup or inconsistent spray pattern on substrate may cause telegraphing.



- 5.15. Avoid extremely heavy application.
- 5.16. To ensure optimal spray pattern, remove any adhesive build up that may occur during the application process.
- 5.17. If overspray occurs, it may be removed with a damp cloth while the adhesive is still wet.

- 5.18. Allow adhesive to dry until there is no adhesive transfer when lightly touched. (10-20 min)



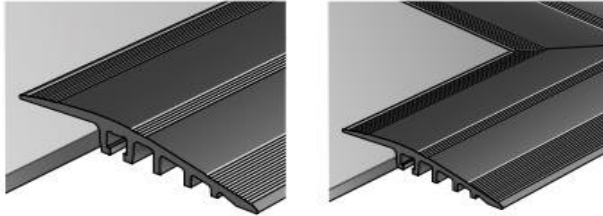
- 5.19. High humidity and/or low temperature increases tack time.
- 5.20. Once the adhesive is dry to the touch, immediately install the flooring. While open, ensure that adhesive is not contaminated by dust.
- 5.21. Roll flooring with a 3 section 100-lbs roller within 1 hour after installation to complete the bonding process.
- 5.22. Always roll seams, at the walls, and under toe kicks with a hand roller to ensure 100% transfer of adhesive.

5.23. Floor is open to all traffic immediately after installation.

NOTE: Use T-111 Polyurethane adhesive in areas that are subject to topical water (i.e. commercial refrigerators, coolers in grocery stores, lobby of buildings, etc. (See T-111 Technical Data Sheet for instructions for proper usage.)

6. DOORWAYS AND TERMINATIONS

6.1. ALUMINUM PROFILE



- 6.2. For heavy traffic and can be used with Creation 22 Solid Clic (Preassembled corner pieces are also available.)
- 6.3. 4mm x 50mm and 30mm long nylon plugs are included in profile kit.
- 6.4. Cut tiles and lay metal at desire location.
- 6.5. Hold metal securely and use hammer to drill 3mm pilot holes through the center of each hole.
- 6.6. Remove metal and finish holes with 6mm drill bit.
- 6.7. Vacuum holes and insert nylon plugs
- 6.8. Realign metal and secure with 4mm x 50mm screws and Philipps screwdriver

7. ONCE THE INSTALLATION IS COMPLETED

- 7.1. Perform a visual inspection of the project.
- 7.2. Repair every imperfection before leaving the project.
- 7.3. Make sure that every vertical obstacle such as doorframes are well trimmed and sealed with an acrylic, silicone, or equivalent sealant product.
- 7.4. To maximize the aesthetic appearance and serviceability of the newly installed flooring, provide your customer with a copy of the **Gerflor USA Maintenance Instructions**.